

# End-to-End

## The Parish Magazine of Rivenhall and Silver End



**CHELMSFORD SILVER BAND**  
**At the Rivenhall Jubilee Fete**  
**Sunday 5 June**

July

2022

50p

## **The Following are our services For July 2022**

### **3<sup>rd</sup> July**

9.30 am St Francis

11 am St Mary's

### **10<sup>th</sup> July**

9.30 am Silver End

11.15 am St Mary's

### **17<sup>th</sup> July**

9.30 am St. Francis

11 am St Mary's

### **24<sup>th</sup> July**

9.30 am St Francis

11.am St Mary's

### **31<sup>st</sup> July**

St Francis

St Mary's

St Nicholas Witham Joint Service Holy Communion 10 am

### **3<sup>rd</sup> Sunday after Trinity**

Holy Communion

All Age Worship

### **4<sup>th</sup> Sunday after Trinity**

Morning Prayer

Holy Communion

### **5<sup>th</sup> Sunday after Trinity**

Holy Communion

Matins

### **6<sup>th</sup> Sunday after Trinity**

Morning Prayer

Holy Communion

### **7<sup>th</sup> Sunday after Trinity**

No Service

No Service

## **Church Contacts**

All Contact should be Via the Churchwardens

Churchwarden Ann Clarke

01376 514825

Churchwarden Peter Hope

01376 502605

Email [phope02@gmail.com](mailto:phope02@gmail.com)

Rivenhall Contact Carole McCarthy

01376 512781

Silver End Contact Ruth Aitken

01376 583846

Rivenhall Website

[www.stmarysrivenhall.co.uk](http://www.stmarysrivenhall.co.uk)

St Francis Silver End Website

[www.st-francis.org.uk/](http://www.st-francis.org.uk/)

Contact the Editor 07904 235101 or [phope02@gmail.com](mailto:phope02@gmail.com)

## **Some thoughts on the Feast of John the Baptist**

### **The Feast of John the Baptist Marked on 24th June .**

"The Biblical story of John, the son of Elizabeth and Zechariah, begins even before his birth. His leaping in his mother's womb is seen as a great alleluia in anticipation of the birth of his redeemer, and in all four Gospels, the good news of Jesus Christ is related as beginning with the emergence of John as the forerunner of Christ. He seemed to have a predestined role akin to that of the Old Testament prophets, particularly in encouraging the people of God to live lives worthy of their calling and in imminent anticipation of the coming of the Anointed One. In the tradition of the early Fathers, John was seen as endowed with grace from before his birth, and consequently the Church has always kept the celebration of this day with greater solemnity than that of his birth.

John's mother was old and barren, while Jesus's mother was young and a virgin. John marks the boundary between the Old and the New Testaments. He represents the past, and heralds the new. When he started to preach about the coming of the Lord he was asked,

"Who are you?" , And he replied, "I am the voice of one crying in the wilderness, a better one than me is coming." Soon after, he baptised Jesus, who then went into the desert, and his journey to the cross began."

Just by reading the above we can see that without John the Baptist, who is also known as the last prophet. The story of Jesus would not be possible he plays a pivotal role in preparing the people of Judaea for the coming of the Messiah in the shape of Jesus Christ. His role in the baptism of Christ and telling the people that while they may think he is the one to save them, an all more greater one than he will soon be with us.

John is known in the Muslim faith as Yahaya and also as John the Baptizer. Luke's Gospel also identifies John as a

relative of Jesus possibly a cousin once removed. But this is not confirmed by other sources.

An account of John the Baptist is found in all extant manuscripts of the [\*Antiquities of the Jews\*](#) (book 18, chapter 5, 2) by [Flavius Josephus](#) (37–100):

Now some of the Jews thought that the destruction of Herod's [Antipas's] army came from God, and that very justly, as a punishment of what he did against John, that was called the Baptist: for Herod slew him, who was a good man, and commanded the Jews to exercise virtue, both as to righteousness towards one another, and piety towards God, and so to come to baptism; for that the washing [with water] would be acceptable to him, if they made use of it, not in order to the putting away [or the remission] of some sins [only], but for the purification of the body; supposing still that the soul was thoroughly purified beforehand by righteousness. Now when [many] others came in crowds about him, for they were very greatly moved [or pleased] by hearing his words, Herod, who feared lest the great influence John had over the people might put it into his power and inclination to raise a rebellion, (for they seemed ready to do any thing he should advise,) thought it best, by putting him to death, to prevent any mischief he might cause, and not bring himself into difficulties, by sparing a man who might make him repent of it when it would be too late. Accordingly he was sent a prisoner, out of Herod's suspicious temper, to [Macherus](#), the castle I before mentioned, and was there put to death. Now the Jews had an opinion that the destruction of this army was sent as a punishment upon Herod, and a mark of God's displeasure to him.

According to this passage, the execution of John was blamed for the defeat Herod suffered. Some have claimed that this passage indicates that John died near the time of the destruction of Herod's army in AD 36. However, in a different passage, Josephus states that the end of Herod's marriage with Aretas' daughter (after which John was killed) was only the beginning of hostilities between Herod and Aretas, which later escalated into the battle.<sup>1</sup>

Biblical scholar [John Dominic Crossan](#) differentiates between Josephus's account of John and Jesus, saying, "John had a monopoly, but Jesus had a franchise." To get baptized, Crossan writes, a person went only to John; to stop the movement one only needed to stop John (therefore his movement ended with his death). Jesus invited all to come and see how he and his companions had already accepted the government of God, entered it and were living it. Such a communal praxis was not just for himself, but could survive without him, unlike John's movement.

\*\*\*\*\*

## **Readings and Collects for July 2022**

### **3<sup>rd</sup> July 3<sup>rd</sup> Sunday After Trinity**

#### **All Age Worship**

Habakkuk 2:1-4

Ephesians 2:19-end

John 20:24-29

#### **Collect**

God our saviour,  
look on this wounded world  
in pity and in power;  
hold us fast to your promises of peace  
won for us by your Son,  
our Saviour Jesus Christ.

### **10<sup>th</sup> July 4<sup>th</sup> Sunday After Trinity**

#### **Holy Communion**

#### **Readings**

Deuteronomy 30:9-14

Colossians 1:1-14

Luke 10:25-37

#### **Collect**

Gracious Father,  
by the obedience of Jesus  
you brought salvation to our wayward world:  
draw us into harmony with your will,  
that we may find all things restored in him,  
our Saviour Jesus Christ.

## **17<sup>th</sup> July 5<sup>th</sup> Sunday After Trinity**

### **Matins**

#### **Readings**

Genesis 18:1-10a

Colossians 1:15-28

Luke 10:38-42

#### **Collect**

Almighty God,  
send down upon your Church  
the riches of your Spirit,  
and kindle in all who minister the gospel  
your countless gifts of grace;  
through Jesus Christ our Lord.

## **24<sup>th</sup> July 6<sup>th</sup> Sunday after Trinity**

### **Holy Communion**

#### **Readings**

Genesis 18:20-32

Colossians 2.6-15 (16-19)

Luke 11:1-13

#### **Collect**

Creator God,  
you made us all in your image:  
may we discern you in all that we see,  
and serve you in all that we do;  
through Jesus Christ our Lord.

## **31<sup>st</sup> July 7th Sunday of July**

### **JOINT Holy Communion 10 am at St Nicolas**

#### **Readings**

Ecclesiastes 1:2, 12-14; 2:18-23

Colossians 3:1-11

Luke 12:13-21

#### **Collect**

Generous God,  
you give us gifts and make them grow:  
though our faith is small as mustard seed,  
make it grow to your glory  
and the flourishing of your kingdom;  
through Jesus Christ our Lord.

## **The 50/50 Club June 2022 winners**

1<sup>st</sup> H Smith

2<sup>nd</sup> A Hook

3<sup>rd</sup> P Little

\*\*\*\*\*

### **RIVENHALL PARISH COUNCIL**

### **NOTES OF THE COUNCIL MEETING HELD ON 7<sup>TH</sup> JUNE 2022**

#### **AT HENRY DIXON HALL, RIVENHALL END**

#### **These notes are an abridged version of the minutes**

**Present:** Cllrs. Abbott (Chairman), Wright (Vice-Chairman), A'Lee, Elliott, Prime and Turner.

**Also present:** Parish Clerk, ECC Cllr. Playle and 3 members of the public.

#### **2242 Chairman's Report**

Major planning proposals continue to affect our largely rural parish. National Grid is consulting until 16th June on proposals for new high voltage power lines carried on 50 metre high pylons across the parish. At this meeting the parish council will be drawing up its response to that consultation and is keen to know the views of residents.

#### **Public Forum**

- \* BDC has allowed the grass to get very long at the Albert Moss Playing Field – the Chairman will this refer to BDC.
- \* BDC is to be requested to replace the dilapidated basketball nets at the Albert Moss Playing Field.
- \* Chairman agreed with requests from a resident on the necessity for local consultations prior to, or immediately subsequent to National Highways submitting their planning application for the A12 widening through Rivenhall End. Concern was raised that local property owners are not being closely consulted by National Highways. The

Chairman clarified that the Parish Council is not privy to, nor can be involved in discussions between National Highways and property owners subject to homes or businesses being taken for the road scheme, but has and will continue to circulate as much other information as it can about the A12 proposals.

- \* Planning application 21/02933/FUL – The Lodge, Rectory Lane has been updated to provide for more energy efficient dwellings.
- \* ECC Cllr. Playle referred to the membership of the Local Highways Panel. Parish councillors brought the many outstanding highways matters to his attention. Cllr. Playle also spoke on the ECC Councillor grants that could be available for local projects with a closing date for applications of 19<sup>th</sup> August 2022.

## **Matters for Discussion**

### East Anglia Green Energy Enablement

After discussion and having the detailed maps of the proposed route to hand, it was **agreed** to recommend to National Grid that the route for the transmission of electricity should not be via pylons across the countryside (including through Rivenhall parish) but offshore direct from the wind turbine arrays in the North Sea to Tilbury.

### Replacement bus shelter

To date there has been no satisfactory reason given as to why the Oak bus shelter on Rickstones Road was removed without prior consultation with the Parish Council, which has always maintained and insured it. Councillors were concerned that in effect it was simply stolen. Some councillors had investigated the condition of the suggested replacement only to find it substandard when compared to the original. It was **agreed** to request Essex County Council to return the



original shelter.

#### BDC re-wilding scheme

It was **agreed by 5 votes to 1** that potential suitable sites within Rivenhall Parish are:

Along the northern boundary of the Albert Moss Playing Field from the new trees to the spinney;

Within the newly tree planted and fenced area in the south eastern corner of the Albert Moss Playing Field;

In the south eastern corner of the main village green;

And potentially along the northern boundary of the Village Hall Car Park.

These areas will be publicised locally for any further comments to be received and considered before submitting a final response to BDC.

#### ECC Highways winter 2022/23 salt bag scheme

It was **agreed** that this be held over to the July meeting and in the meantime for the number of available salt bins within the parish to be ascertained.

#### Three Parishes Meeting

The next meeting is scheduled for 4<sup>th</sup> July 2022 at Silver End.

#### Highway Maintenance

- (a) All outstanding issues have been re-reported to ECC and Cllr. Playle was made aware of members' concerns about the number of outstanding defects and issues.
- (b) Two areas of roadside verge have been submitted to BDC for cutting to improve sightlines – Rickstones Road, opposite the first house below Stoverns Hall, and Oak Road at the exit from Footpath 59.
- (c) Brambles are encroaching onto the A12 cycleway – the Chairman will report this to National Highways.

- (d) Concern was raised regarding the number of occasions temporary highway repairs are made by ECC before any permanent solution is undertaken.

### General Maintenance

The Chairman has reminded ECC of the outstanding repair needed to the large pothole at the entrance to the Tarecroft Wood car park.

Another post has been damaged at the Village Green. The Clerk will request that the maintenance contractor undertake the repair and also will ask if he can repaint all the posts.

The Clerk will arrange for the repair of the notice board outside the Village Hall.

### **Planning Applications**

**22/01119/HH:** Two-storey rear extension at 2 Rivenhall Fields, Rickstones Road.

A 'No Comments' letter was forwarded to BDC after email consultation between councillors.

### **Planning results**

**21/03390/HH:** Single-storey rear extension – 15 Foxden, Rivenhall End.

Application granted by BDC.

**22/01063/AGR:** Prior approval for a general-purpose agricultural building to store machinery at Appleford Farm.

Prior approval given by BDC.

### **Ongoing Planning Issues**

#### A12 to A120 widening

As detailed in the report previously circulated from councillors who attended the local parish update held with National Highways on 16<sup>th</sup> May, the new Quarry access will remain close to the location of the existing one, at the top end of a reconfigured Little Braxted Lane.

Another Liaison meeting is possible prior to the submission of National Highway’s planning application.

BDC Local Plan

There is still no confirmation of when the new Local Plan will be Adopted. (**Post meeting note:** BDC has now received the Local Plan Inspector’s letter and has been advised that the new Local Plan can be Adopted subject to minor changes. This will now be considered at 2 meetings at BDC in July).

Rivenhall Airfield Major Waste Site

Application **ESS/01/22/BTE/03/01**: Pursuant to condition 3 (Road signage) of ESS/01/22/BTE – temporary use of Woodhouse Lane by non HGV vehicles.

It **was agreed** that no comments needed to be forwarded to ECC about the signage.

Braintree Local Highways Panel

The next meeting is scheduled for 30<sup>th</sup> June 2022

**Information exchange and items for the July agenda**

- \* BDC consultation on Planning Forums – next meeting.
- \* The fencing at the Albert Moss Playing Field tree planting area has been completed as per specification, the invoice is awaited.
- \* There has been no further response from Essex Police regarding their proposed visit to the parish.

**Dates of future meetings**

5<sup>th</sup> July and 2<sup>nd</sup> August at Rivenhall Village Hall, both starting at 7.30pm.

\*\*\*\*\*

## **Sky Notes July 2022**

Following the Summer Solstice on 21st June, the nights draw in a little, but even at the end of July sunset is still as late as shortly before 9pm.

All-night summer twilight comes to an end during late July such that by the end of the month there is an hour of "astronomical dark" either side of local midnight at 1am BST.

Noctilucent clouds (NLC) can still be seen in July, especially in the first 2 weeks of the month. There is some evidence that NLC activity reduces when solar activity picks up during the 11 year Solar Cycle. The Sun is currently becoming very active as the new cycle builds, with lots of sunspot groups developing, so it will be interesting to see if many NLC displays are seen this summer or not. The best time to try to view NLC is on any clear evening from around 10.30 to 11.30pm, looking to the North.

On 4th July, Earth is at aphelion – the furthest point from the Sun in its slightly elliptical orbit.

Full Moon this month is on the 13th July, so the second half of the month will bring darker skies for stargazing. The summer Full Moon remains very low in the sky, only climbing to 11 degrees above the horizon when due South in the small hours.

Saturn moves into the evening sky and will be in the South East at midnight by the end of the month, quite low down. The Moon, just past Full, will be below Saturn during the night of the 15th/16th.

Further round to the East (to the left) at around midnight, Jupiter is starting to rise and will be joined by the waning gibbous Moon on the 18th. Jupiter will appear brighter than any star.

Mars is still a morning object, but is now on show in the East by about 1am and is steadily getting brighter ahead of its good showing later this year. The old crescent Moon will be nearby the Red Planet on the 22nd.

Sky Watcher

## **RIVENHALL GARDENING CLUB**

Club members met on Tuesday 14<sup>th</sup> June 2022, in Rivenhall village hall. Chairman, Mrs. Tracy Scott, gave out the notices and welcomed our speakers for the evening, Club members Cyril Philpott and Brian Cradwick, both experts in their own field. Cyril spoke about the growing and care of fuchsias, he has won numerous prizes for his beautiful plants. Cuttings should be taken in September/October and planted out in 3inch pots. They will root easily in a perlite or vermiculite and compost mix. Move them on to pots only 1 inch larger each time and feed them with Chem Pack No. 3 for a balanced feed. Fuchsias prefer tepid rainwater and it is advisable to 'warm up' the water if it has been in the water butt as this will get rid of the build up of chemicals. Always water from the bottom of the pot. Fuchsias do not like full sun and if in the greenhouse the temperature should be about 40degrees F. Cyril will be showing some of his fuchsias in our summer flower show. Brian Cradwick is the succulent expert and brought many examples to show us, all of them very attractive, all different in size, apparently there are hundreds of different types. Succulents contain water so in hot weather Brian waters them once a fortnight but from September to May not at all. It is not necessary to grow them in compost Brian uses a mix of perlite, vermiculite and non-clumping cat litter! He grows about 800 plants with over 100 varieties and every year attends the Flower Show at R.H.S. Hyde Hall. If well looked after succulents can live 30 to 40 years. It was an interested and enthusiastic audience who had many questions for Cyril and Brian, an enjoyable evening.

## **COMPETITION RESULTS**

Horticultural

1<sup>st</sup> Maurice Bacon.

Domestic —

1<sup>st</sup> Karen Dakin.

Photograph of the Month

1<sup>st</sup> Sue North. 2<sup>nd</sup> Karen Dakin.

Flower of the Month

1<sup>st</sup> Vivienne Dee. 2<sup>nd</sup> Cyril Philpott. 3<sup>rd</sup> — Sue North.

The JULY meeting will be a members only visit to Hyde Hall.

The next general event is our **SUMMER FLOWER SHOW** on **SATURDAY 16<sup>th</sup> JULY, 2.15pm** in Rivenhall village hall. All are welcome to see a beautiful display of blooms and floral arrangements. Home made teas. Raffle. Free Admission. We look forward to seeing you! For any further details contact the Club Secretary on 01376 512781.



COLEMANS COTTAGE FISHERIES

## Lakeview Tearooms

Come and enjoy the view whilst  
having a bite to eat



**Open Thursday to Sunday 9am to 3pm**  
**Breakfast, Lunches**  
**Bar, Snacks**  
**Afternoon Tea**  
**Sunday Roast (01376 516383 to Book)**

For more information go to:

<http://www.colemansfisheries.co.uk/witham/cafe/>

Colemans Cottage Fisheries

Little Braxted Ln, Witham CM8 3EX

FREE PARKING 01376 516383

**Grow, Flourish. Succeed**

**Academy  
Nursery**



Opening September 2022, we are  
pleased to be offering a nursery  
for children ages 2 years and up.

Each session will cost £10 (£20  
for a full day)

Nursery sessions will in term time:

Mornings: 8.45am - 11.45am

Afternoons: 11.45am - 2.45pm

All Day: 8.45am - 2.45pm

If you would be interested in a  
place, please email

[nurserysil@connectedlearningmat.co.uk](mailto:nurserysil@connectedlearningmat.co.uk)  
with your child's name, date  
of birth and the sessions and days  
you require.

Aerial Photography

Barns

Chimneys

Roof Tops

COST EFFECTIVE, SAFE ACCESS,  
ROOF TOP INSPECTIONS BY  
DRONE WITH NO NEED FOR  
SCAFFOLD, TEMPORARY WORK  
OR STRUCTURES REQUIRED.



NON DISRUPTIVE, FAST AND  
PROFESSIONAL SERVICE, SAME  
DAY REPORTS AND  
RECOMMENDATIONS FOR  
REPAIRS

FULLY CAA AND CIOB  
REGISTERED, QUALIFIED AND  
INSURED SERVICE. CARRIED OUT  
BY EXPERIENCED SURVEYORS.

Call to discuss your requirements;  
Chris: 07817219133  
Jim: 07966403783  
email: [highsightse@gmail.com](mailto:highsightse@gmail.com)

Historic Buildings Monitoring

Building Inspections

Estate Records

# ANGLIA TREE SERVICES

Specialist tree surgery

Residential & Commercial Customers

CROWN REDUCTION • FELLING • TOPPING

HEDGE TRIMMING • ALL GARDEN WORK

STUMP GRINDING

For a quick, tidy and friendly service call:

Tel: 01621 892831



7 DAYS A WEEK • EMERGENCY SERVICE AVAILABLE • FULLY INSURED



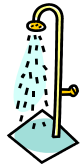
**Philip Little**

Property Maintenance Magician

Local service at local prices

Knowledgeable and friendly

**07973 129808 or 01376 515257**





Serving the Local Community for over 125 Years

# G. COLLINS & SONS

Funeral Directors Ltd



30 RAYNE ROAD, BRAINTREE, CM7 2QH

01376 342266

4 THE STREET, WHITE NOTLEY, CM8 1RH

01376 583750

WWW.GCSFD.CO.UK

## Beautiful Rooms For Rent In Witham & Braintree

We have 4 Lovely houses  
2 in Witham—2 in Braintree  
With and Without en-suites  
£90—£130 per Week

(All inclusive of Rates, Light, Heat, and with Broadband)

See our Website:- [www.jbwpartners.co.uk](http://www.jbwpartners.co.uk)

Or Call

John

07850 161629

Mavis

07714 579783

Michelle

07966 323914

**HELP WITH  
FUNERAL ARRANGEMENTS  
*RICHARDS*  
FUNERAL SERVICE**



**01376 513114**

78 Newland Street, Witham, CM8 1AH

From advice on how to register a death to making all the arrangements, we're here 24 hours a day.

Members of the National Association of Funeral Directors  
A British Owned Company [www.dignityfuneral.co.uk](http://www.dignityfuneral.co.uk)

***SpeedyBroadband.co.uk***

***Sick Computers my  
Speciality***

- Home Networking Problems Sorted Out
- Computer Viruses Removed
- Operating System Upgrades
- Upgrade to Windows 10

**FOR YOUR FREE SURVEY AND  
QUOTATION CONTACT**

**Peter Hope**

[Peter.hope@speedybroadband.co.uk](mailto:Peter.hope@speedybroadband.co.uk)

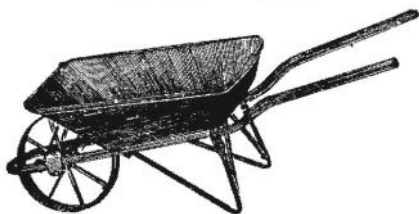
**Tel: 01376 502605**

**Mob: 07904 235101**

**Website**

[www.speedybroadband.co.uk](http://www.speedybroadband.co.uk)

**Ya Garden  
Cares**



**Thorough Attention on  
Bed Maintenance,  
Mowing & Clearance**

**Telephone  
Barry: 07732337626**



**Lizard Orchid,**



**Leptopterna dolabrata bug  
from Whetmead**



**Swan family at Whetmead**

These Pictures accompany the article in the Magazine by Simon Taylor End-End Nature Care



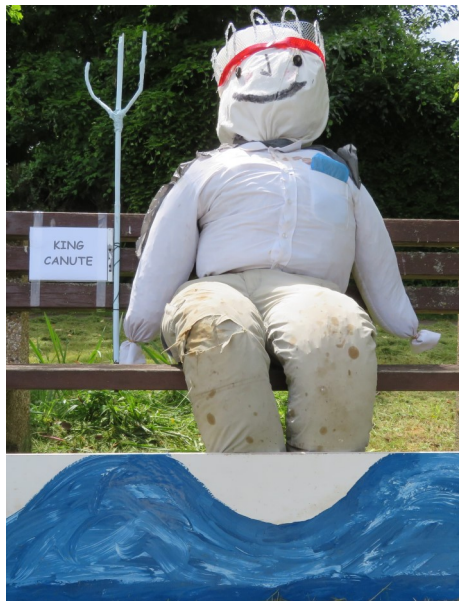


The Rivenhall Jubilee Fete held on Sunday 5th June  
Classic Cars on the Village Green and Bagpipe music





Again there were many wonderful entries in the Scarecrow competition This year







On the 3<sup>rd</sup> July, the Rivenhall Jubilee Oak tree was planted. Thank you to everyone who attended and helped with the planting.

This Oak tree and the more than 100 trees planted by the parish council this year have been registered as part of the Queen's Green Canopy project.

This 70<sup>th</sup> Jubilee Oak was planted a suitable distance from the 60<sup>th</sup> Jubilee Oak planted in 2012, grouped with the large mature Oaks that give this part of Rivenhall its local name.

There are some veteran Oak trees in the parish that may well have been growing during the reign of the first Queen Elizabeth in the C16th.



## FOOT HEALTH PRACTITIONER



THE SMAE INSTITUTE

### HOME VISITS



NAIL  
TRIMMING

CORNS

CALLUS

THICK NAILS

HARD SKIN

COVERING:

Chelmsford

Witham

Danbury

Stock.....

**JAMES NEWMAN (MCFHP,MAFHP)**

**TELEPHONE: 01376 519036**

**MOBILE: 07793971351**



## PC Doctor Operations Limited

**For all your computer  
requirements including:**

Virus prevention, detection & removal  
Broadband, Networking, Wireless & Firewall set up  
Email & SPAM filtering  
Hardware Repairs & Upgrades  
Software Faults & Crashes  
Backup Solutions & Data Recovery  
Software Installation & Removal  
Hardware & Software Supplied  
Website Management • Computer Training

**Health  
Checks  
£39.99**

**Office: 01621 891064 • Mobile: 07990 565336**

**Email: support@pcdocops.co.uk**

**Website: www.pcdocops.co.uk**

Monthly subscription service available to provide complete "peace of mind" and allow you to spread the cost of your IT requirements.

Please contact for further information.



## Brookend

VETERINARY PRACTICE LTD

62 Braintree Rd Witham

**CARING FOR THE PETS OF WITHAM AND  
THE SURROUNDING AREA FOR 25 YEARS**

**SPECIAL O.A.P. SURGERY THURSDAYS**

**CAT ONLY CLINIC WEDNESDAYS**

**Late night surgery Wednesday till 8pm**

**Surgery Opening hours  
Monday to Saturday for appointments**

**Tel: 01376 500038**

**www.brookendvets.co.uk**

## REYNOLDS

### CARPENTRY SERVICES

**For all Carpentry, Joinery  
& Cabinet Making Requirements**

**CSCS Registered**

**30 Years Experience**

**4 Years Apprenticeship**

**City & Guilds and**

**Advanced City & Guilds Qualified**

**Free estimates – No obligation**

**All building work considered**

**Can also make items to order**

**also**

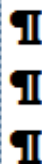
**'curtain poles, tiling, flat packs,  
kitchens, doors, sheds etc, no jobs  
too small'**

**Contact**

**07889 110962**

**Answer phone at other times**

# Jeremy Larke Television services



Telephone: 01376 513645

Mobile: 07947 601619

Email: telerepair@aol.com

All Television Systems Catered  
for Freesat, Freeview, Sky.

- Installations & Repairs To all makes and models
- Full Plasma & LCD Fitting Service
- Wall Mount Brackets Supplied and Fitted
- Aerial & Satellite Dishes Fitted
- Freeview, Freesat & European Channels
- View and Control Your Sky in Other Rooms
- Aerial and Telephone Extension Points Installed



**Don't Delay Call Today**

## Janet C Davies

Dip. F.D. M.B.I.F.D

**BRAINTREE & KELEVEDON'S LADY FUNERAL  
DIRECTOR**

*Offering a full and Comprehensive Funeral Service*

**Telephone 01376 339300**

*For a Personal and Caring 24 hour service*

Local Chapel of Rest at Fern House 72 Coggeshall Road Braintree and  
Victoria House, Trews Gardens, Kelvedon

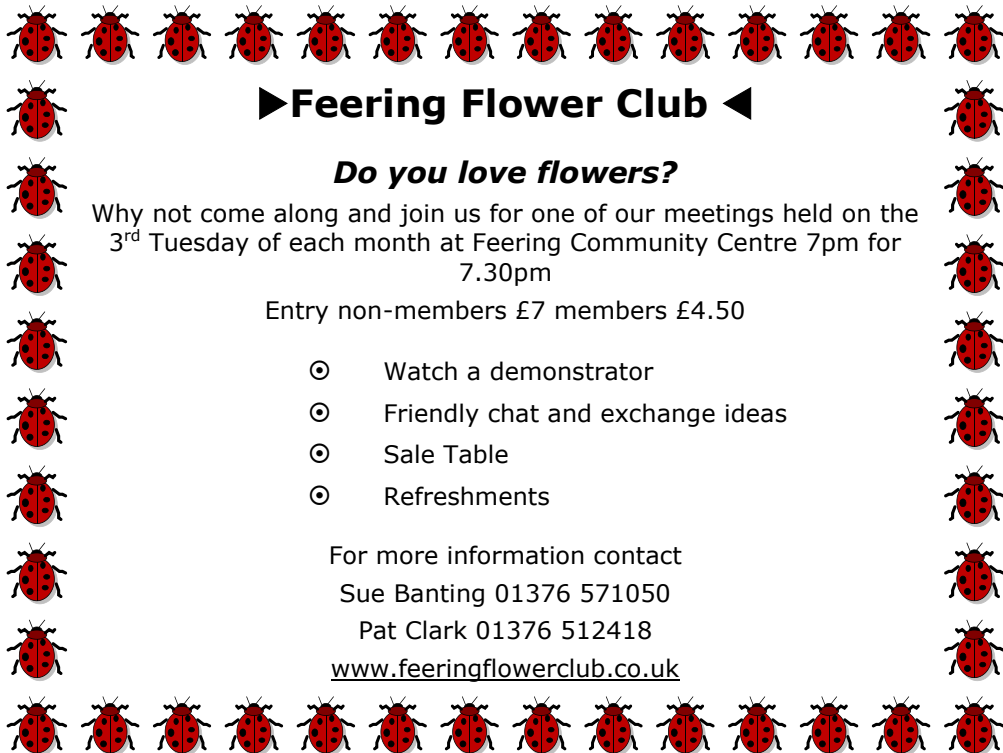
Funerals are arranged and carried out in the Traditional Manner but  
With 'The Gentle Touch'

Pre payment Plans available—Floral Tributes arranges—Woodland Burials  
Bereavement Care—Low Cost Simplicity Funerals - Memorials—Printing  
Catering—DWP Funerals

Part of the Hunnaball Family Group

Members of the National Association of Funeral Directors





## ►Feering Flower Club ◀

### *Do you love flowers?*

Why not come along and join us for one of our meetings held on the 3<sup>rd</sup> Tuesday of each month at Feering Community Centre 7pm for 7.30pm

Entry non-members £7 members £4.50

- ⊙ Watch a demonstrator
- ⊙ Friendly chat and exchange ideas
- ⊙ Sale Table
- ⊙ Refreshments

For more information contact

Sue Banting 01376 571050

Pat Clark 01376 512418

[www.feeringflowerclub.co.uk](http://www.feeringflowerclub.co.uk)

## DANIEL ROBINSON & SONS

Incorporating  
W C BROWN & SONS

**Independent Family Funeral Directors & Monumental Masons**

*A professional, caring, 24 hour service*

Private Chapel of Rest

Fleet of air conditioned limousines

Horse drawn funerals available

Traditional and contemporary funeral services to suit your wishes

Funeral pre-payment plans

Arrangements may be made in the comfort of your own home, if preferred

**Haslers Lane**  
**Great Dunmow**  
**Tel: (01371) 874518**

**7 Manor Street**  
**Braintree**  
**Tel: (01376) 320582**

**31 High Street**  
**Halstead**  
**Tel: (01787) 475533**

**[www.drobinson.co.uk](http://www.drobinson.co.uk)**

## Turning the pages of History Research by Tracy Scott

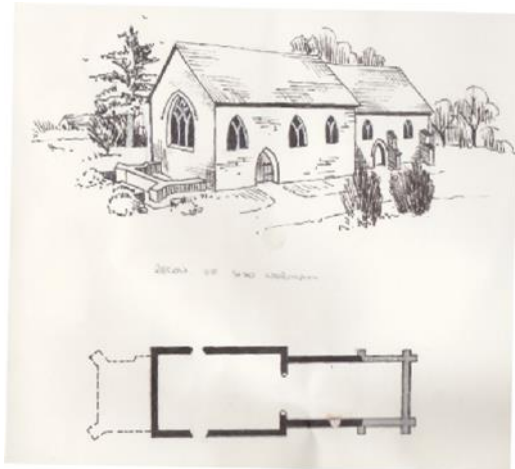
In May we started looking at the Rectors of Rivenhall from the articles written by Rev. David Nash in 1975/6. So this month we carry on with this interesting history.

### Rectors of Rivenhall Part 4 By Rev. David Nash

In 1330, the rector was a man called William de Lalleford; he is the last rector to use a French form of surname – English was becoming a language in its own right and it replaced French in those schools that existed in 1350. Chaucer, who was to do a lot for the English language was a mere boy of about 9 years of age at this time. William de Lalleford was most likely responsible for the building works at Rivenhall Church in that early part of the 14<sup>th</sup> century; the chancel was doubled in length and work was afoot in digging the foundations of a tower. The archaeologists have found that after the trenches were dug the project was abandoned. The two most obvious reasons for this must be (a) Lack of money or (b) Lack of man-power.

Some land-owners in these parts during the Middle Ages had increased their income by going in for sheep-farming...the wool trade was booming; but the change meant fewer employees, discontent and peasants on the move. The plague (Black

Death) struck in 1349; it did not affect all parts of England equally. If it struck Rivenhall at all, then the important question to ask is "Had the farmers gone over to sheep by this time?" If so, there could have been a situation of money, fewer people by the temptation of the landowners to build up their own egos by improving the parish church. If the land,



however, was still largely arable, all-round poverty could have hit the village so that there was no more money!

Pretty soon there were very few people anyway; A man who could have told us was Richard Dun (or Dyne) Rector in 1352

### Part 5

The year? 1353 Rewenhale (Rivenhall) is again a ruin! Autumn leaves blow into the hollowed-out ground where the tower was to have stood. The single bell in its bell tower near the present notice-board (1975) rings out for the few villagers to attend nine o'clock mass. The Black Death has decimated the population in many places and impoverishment of the land has followed in its train.

The rector, Richard Dun is seldom in the village since he has other calls upon his time; a down at heel curate does most of the work; he's allowed to live in the decaying Medieval rectory at the back of the churchyard since it's one sure way of stopping its falling down altogether. People are grumbling and it is not surprising to the few remaining Rivenhallites that their few young men agree with nearby Cressing men to lead a gang across to Cressing Temple to destroy records and help themselves to anything that's going. We have now reached 1381. Sir Robert Hales, Treasurer of England, and owner of Cressing Temple is captured and together with Simon Sudbury, Archbishop of Canterbury is beheaded on Tower Hill. John Ball, rector of St. James, Colchester together with Wat Tyler is among the leaders of the revolt. They, in turn, will soon be executed...but what of the peasants of Rivenhall? This, most likely, was the time of the final desertion of the old village. Why stay and be arrested? And if no village, why run the church? There is a clue, and quite a good one, as to what now happened.

### Part 6

The field next to the North fence of the churchyard is called "Little Nunnery" on our old maps. This may well be answer last month's final question. Without a population, Rivenhall trundled on the strength of a local religious settlement.

Money could be obtained by the founding of chantries for perpetual masses to be offered in memory of wealthy patrons. We know that one such chantry which received the royal licence in 1397, carried the signature of John de Cleye, parson of Rivenhall; it was for a daily celebration of the mass at the altar of St. John the Baptist in Witham Parish Church for the good estate of Dame Joan de Bohun, and various others. John Dyne, or Dunn takes us into the 15<sup>th</sup> century until 1407 when he was succeeded by John Whitacre. Dunn resigned the living; perhaps the life at Rivenhall was cold and lonely. Having more than one door open at the church did not help; the blocking of the main South door probably dates from this time.

### Part 7

The Fifteenth Century John Keynell was parson here in 1435; he is not called 'rector' so perhaps he was put in whilst the real rector enjoyed life in some more popular place.

Such a man might have been James Goldwell, rector up until 9<sup>th</sup> August 1461 when he resigned the living. He appears, as Archdeacon of Essex to have been an absentee rector; moreover a James Goldwell became Bishop of Norwich by Papal Provision in 1472; almost certainly the same man, the Bishop died in 1499.

John Wodde S.T.B. was instituted rector on 9<sup>th</sup> Aug. 1461; S.T.B. is latin...Sacrae Theologiae Baccalaureus...Bachelor of Theology. John had been Vicar of Rettendon; in 1475 he had become Archdeacon of Middlesex; we do not know if he held on to Rivenhall. Henry Helthwatt came next of whom we know little but his name and he was followed by Robert Underwood he died in late 1495.

By 1300's we now see something so familiar in our village today Rector David Nash in 1971



Rector David Nash in 1971

September we move onto the late  
15<sup>th</sup> century and into the reign of Henry VIII

\*\*\*\*\*

## **Rivenhall Platinum Jubilee Fete Sunday 5<sup>th</sup> June 2022**

What a remarkable afternoon we all enjoyed on the green in the heart of our village on this very special day to celebrate 70 years of the reign of our very loyal Queen Elizabeth II.

The Rivenhall Millennium Committee had been planning this fete for over a year, engaging with all our local groups and societies. Their behind-the-scene activities took very considerable time and effort, working up to a crescendo on the day.

At 2 pm, Chairman Bob Turner addressed the crowd, welcoming everyone and outlining the day's programme. The Chelmsford Silver Band played the National Anthem, and then enthusiastically and boisterously performed a wonderful selection of carefully planned music - all very much enjoyed by the large crowd of over 250 villagers: and how wonderful it was to see a great mix of ages. There were 22 musicians in the band; so large that two percussionists actually sat to one side, below the elevated, colourful red, white and blue stage.

Cream teas were served throughout the afternoon, masterminded by Jenny Turner, Laura Hatley and Hayley Larkin. Pam Newall and Philip Little ran the barbeque all afternoon, ably supported by Sam and Mia Little. Their burgers and hot dogs proved to be in very high demand indeed.

A lovely touch was the final tune of the band's first set: it was "Happy Birthday" which they charismatically played for Charlie Staunton, our local singer who was to perform later and whose birthday was just a few days earlier - Charlie was clearly moved by that!

Next, in immaculate highland dress were pipers Jackie Allan and George Atkinson who together played several lovely much

appreciated sets of famous Scottish tunes.

It was then Charlie's turn on stage. She sang a rousing number of songs, much enjoyed by the wonderfully large crowd. This was followed by the results of the children's fancy dress competition (well done all), and the awards for the top three village Jubilee scarecrows (1<sup>st</sup> Karen Dakin, 2<sup>nd</sup> Tony Sandeman, 3<sup>rd</sup> Kate Eagle). Our Essex County Councillor Ross Playle judged the scarecrow competition this year and joined us on the green for the whole event. We thank Ross and we thank all who created their royal scarecrows - some formal and some comic - so much pleasure around the village (numerous beaming smiles!).

The fund-raising raffle managed by Lilian Pearce and Carole McCarthy, was wonderfully supported with an array of splendid and varied prizes. The raffle was drawn by our effervescent Team Rector Rev Jonathan Pritchard ~ as Jonathan drew the final two winning tickets there was even an amusing drum-roll accompaniment!

The Silver Band returned to the stage for their second (and generously long) set of tunes, again much enjoyed by all. When they finished, they received a long enthusiastic and very-well-deserved round of applause. Jackie Allan then took over the entertainment mantle and played several more sets on her bagpipes.

Charlie had the final early evening session: with a final rip-roaring set of popular songs; she also was given a long well-deserved round of applause.

On a day that threatened to be a wash-out but which miraculously remained dry (excepting the odd spit that did not even require a raincoat or umbrella), how better could Rivenhall have celebrated Her Majesty's Platinum Jubilee? It was a brilliant village get-together.

An enormous *Thank-You* to The Rivenhall Millennium Committee and notably Wilson Kerr who tirelessly on the Saturday, Sunday and Monday moved numerous chairs and tables back and forth between the village green and both Henry Dixon Hall and the Village Hall. And also thank-you

to, all the stallholders, all the voluntary helpers (especially Jason Lister who worked tirelessly all day), DRH Landscapes who freely provided all our mobile toilets (your convenience was their pleasure), but most of all, to everyone in Rivenhall who came along and made this a very sociable, very memorable, Platinum Jubilee celebration, and of course a very special day.

\*\*\*\*\*

### **End to End Nature Care. Pictures are in the centre of the Magzine**

There are few things more pleasant to do on a warm summer evening than linger by a river and we have recently been doing just that. Early in June we spent an evening exploring the River Brain at Hole Farm, Faulkbourne and found a good range of aquatic species, including abundant larvae of the Banded Demoiselle damselfly (*Calopteryx splendens*: the flying adult male is blue with very distinct dark bands on the wings but the larvae, as with all dragonflies and damselflies, are entirely aquatic). We also saw some interesting fish such as Three-spined Stickleback (*Gasterosteus aculeatus*), Minnow (*Phoxinus phoxinus*: in summer, males are beautifully coloured) and the quaintly named Miller's Thumb (*Cottus gobio*). There was also an abundance of caddisfly larvae, which generally inhabit an elongate case made from natural materials providing excellent camouflage, in this case mainly rolled pieces of leaf.

We also went to Whetmead, the nature reserve at Witham (accessed along Blackwater Lane from Maldon Road). The triangular site sits at in the angle of the confluence of the rivers Blackwater and Brain, the third side being defined by the A12. The riverside paths there provide great views of the countryside beyond as well as bird life and the adjacent flora. We hoped for orchids are were not disappointed, finding several Bee Orchids (*Ophrys apifera*) as well as the highlight of the evening, a spectacular and quite scarce Lizard Orchid (*Himantoglossum hircinum*). Sweep netting of the undergrowth provided numerous insect records including several attractive bugs, such as the Meadow Plant Bug (*Leptopterna dolabrata*).

Our third riverside outing of the month was to the Packhorse Bridge on the river between Kelvedon and Feering. This isn't the current road bridge over the River Blackwater but part of the ancient crossing point when the road was straightened and the new crossing constructed. The Packhorse Bridge fell into ruin but was recently restored through the efforts of a local society formed for that purpose, who now look after the restored bridge and the small island it accesses, which they manage as a nature reserve. Chris Papworth from the society kindly hosted us for the night, telling us about the background and history of the site while also encouraging us to explore and record the fauna and flora (a project we will continue over future years).

Coming up in July, amongst other things we shall be again looking for insects, including our annual glowworm surveys at Cressing. Details are below, with further information on our website: [www.e2e.silverend.org](http://www.e2e.silverend.org). We also have a Facebook group (End to End Nature Care), where anybody is welcome to post images or details of local observations of fauna and flora. For further details about us and any of our activities, I can always be contacted on [simon@e2e.silverend.org](mailto:simon@e2e.silverend.org) or 07947 388180.

DATE	TIME	ACTIVITY
06 July	19:00	Summer Social at Stovern's Hall Farm (CM8 3HQ or TL825172). Bring a bottle and/or nibbles.
13 July	19:00	Insect surveying. Silver End pits and Rivenhall Place. Meet at Western Arms car park. Followed by optional glowworm survey at Bulford Mill Lane (Meet at Cressing Railway Station).
20 July	18:30 for 19:00	Tiptree Heath. Meet at 18:30 at Stovern's Hall Farm to car share or at 19:00 at the Heath car park (TL882148).
27 July	22:30	Glowworm survey at Bulford Mill Lane (Meet at Cressing Railway Station).
03 Aug	19:00	A visit to the Trafalgar Wood at Porters Farm (grid ref TL834193 postcode CO5 9DD) on Hol-low Road between Silver End and Kelvedon.



## ***Rivenhall Platinum Jubilee Fete – St Marys Activities Sunday 05 June***

The Millennium Committee asked the village organisations if they would like a presence at the proposed Jubilee Fete and for St Mary's the matter was delegated to the Fund-Raising Committee.

We were pleased to undertake something to provide a presence of the Church in the community. After a brain storming meeting we decided to concentrate on simple games for young children.

We had 'hook-a-duck', 'coloured nail board game', 'guess the number of sweets in a jar' (won by Amelia Mullan with a guess of 156 – nearest guess to the 147 sweets in the jar), and a 'treasure hunt sandpit game'. Plus an amazing buzzer game, for free, where you needed a steady hand to thread around a winding wire. If you touched the wire, a buzzer sounded! Lots of patience needed, but lots of fun!

Much thanks to Marie, Galley, Ann Riddleston, Ann Kerr, Ann Clarke, Martin Lampshire, Peter and Sarah Hope and Dave Atkinson for ideas, prizes, manning the stalls, bunting and providing gazebo and erecting.

A modest profit was made, but the main thing was we all provided some fun for all, and mainly the children, who loved it!

Martin Andrews, Chairman, Fund-Raising Committee



## Organisations in Rivenhall

Clerk to Parish Council	Keith Taylor	516975
Email parishclerk@rivenhallparishcouncil.net	meets every first Tuesday	
End to End Nature Care	Simon Taylor	01621 810141
Gardening Club	Carole McCarthy	512781
Meets on 2nd Tuesday at 7.30pm in Village Hall		
Carpet Bowls	Mick Marshall	512836
Meets every Thursday at 7.30pm in Village Hall		
Playing Fields Association	Mick Marshall	01376 512836
Spread Your Wings Dance Acam	Laura Pearson	01376 741317

## Facilities

Hire of Village Hall	email rivenhallvillagehall@gmail.com	
Hire of Henry Dixon Hall	Tracy Scott	571551
Oak Store Rivenhall "Open All Hour" Tel AJ		01376 538838

## Organisations in Silver End

Clerk to Parish Council	Mrs B. M. Temple	618464
Email parishclerk@silverendparishcouncil.gov.uk		
Bowls Club	Paul Mann	07551 006906
Children's Centre	Faye Savage	587960
Neighbourhood Police	Braintree Policing Dial 101	
Congregational Church	Sharon Gray	583913
Friendship Club	Maureen Green	585275
Silver End Gad Abouts	Denise Sullens Smith	07952 992782
Gardening Club	Liz Woor	585586
Guiding Group	Carol Hutchings	07857 663959
Neighbourhood Watch	Judy Hill	07896 975839
Scouting Group	Elaine Hall on +44	7885 489788
St Mary's Church (R.C.)	Vivian Phillips	583598
Tennis Club	Jason Cairns	584581
Workers Educational Assoc.	Brian Gillion	583706
Luncheon Club	Helen Thomson	583255
Doctors Surgery		583387
Silver End Heritage Society	Jackie Nesbitt	07707 084608
Silver End United Football Club	Mark Edgell	584639 Web
Site www.silverendunitedfc.co.uk		
Women's Institute	Brenda Warnes	07931 548193
Community Warden	Jackie Windard	07785 515526
Post Office in Co-op - please note that it closes at Lunchtime 1-2pm		
Closes 1 pm Wednesday and 12.30 pm Saturday		
Library: Tues & Thurs - 2pm to 6pm Saturday 9am to 1pm		

HUNNABALL

Family Funeral Services



Here **whenever** you need us

Funerals | Memorials | Pre-paid Funeral Plans

**Hunnaball of Witham**

1 Coach House Way, Newland Street, Witham CM8 1YJ

**01376 511592**

[www.hunnaball.co.uk](http://www.hunnaball.co.uk)

**JANET C DAVIES**

Lady Funeral Directors



**Our Ladies  
in Hats**

*"funerals with  
a gentle touch"*

Funerals | Memorials  
Pre-paid Funeral Plans

**Janet C Davies of Kelvedon**

233 High Street, Kelvedon CO5 9JD

**01376 573691**

[www.hunnaball.co.uk](http://www.hunnaball.co.uk)

# DRH LANDSCAPES

Est. 1987

Quality Comes 1<sup>st</sup>

**Garden Landscape and Design – Hard Landscaping – Soft Landscaping  
Grounds Maintenance for Private and Commercial Premises**

- Are you planning to redesign and landscape your garden?
- Does your garden just need a little TLC or a complete makeover?
- Are you looking for assistance with regular garden maintenance or perhaps a one-off visit to get things back in order?
- Is your lawn looking tired? Would you like a new replacement lawn or artificial lawn instead?

We are a family run business with over 30 years of experience working in the ever changing world of landscape management, business regulations and horticulture, with full public and employer liability insurance, as well as being a fully registered waste carrier with the Environmental Agency.



OFFICE: 01376 514142

We welcome...



EMAIL: [info@drhlandscapes.com](mailto:info@drhlandscapes.com)

[www.drhlandscapes.com](http://www.drhlandscapes.com)

Harcog Centre, 77-83 Maldon Road, Witham, Essex CM8 1HP

